



# YTECH ENTERPRISE

***BUILD WITH US***





# ABOUT US

We at **YTECH** view professional engineering as a highly skilled and personalized service. As the frontiers of structural engineering advance, rapidly accumulating resource of knowledge, experience and expertise equip us not only for refined conventional design but also, to investigate, develop and use designs beyond the boundaries of convention. Our strength lies in using the state-of-art tools and keeping abreast of the latest technological advances for **optimizing both for economy and safety aspects**. Our core area of expertise lies in new designs of Reinforced concrete and Steel structures. We assures the commitments made for **Time, Economy and Quality**.



# ASSOCIATES

## ▪ **ATAUR REHMAN**

- **PHD.** :-STRUCTURE ENGG.( PURSUING).
- **M-TECH** :-EARTHQUAKE ENGG.
- WORK EXPERIENCE MORE THAN **9** YEARS.
- EXPERTISE IN BOTH STEEL AND R.C.C STRUCTURES.
- DESIGNED NUMBER OF RESIDENTIAL, COMMERCIAL, GROUP HOUSING AND INDUSTRIAL PROJECTS.
- WORKED ON PRESTIGIOUS PROJECTS LIKE **D.L.F. ,OMAXE, ARCOP, CONFLUENCE, PPAL, VIZAG**, ETC.
- SOFTWARE PROFICIENCY :- STAAD PRO, ETABS, SAFE, AUTOCAD, SAP, MS-OFFICE.



# ASSOCIATES

## ▪ **DHEERAJ GARG**

- BTECH CIVIL
- WORK EXPERIENCE OF 4 YEARS
- EXPERTISE IN R.C.C STRUCTURES AND GOOD COMMAND IN STEEL STRUCTURES.
- DESIGNED VARIOUS GROUP HOUSING, COMMERCIAL, HOSPITALS AND RESIDENTIAL PROJECTS.
- VARIOUS PROJECTS INCLUDE:- **AIMS, DR. LAL PATH LABS, SRS AFFORDABLE HOUSING, TOURIST FACILITIES AT MANTALAI(SRINAGAR)**
- GOOD COMMAND ON SOFTWARES LIKE:- ETABS, SAFE, MS OFFICE, AUTOCAD.



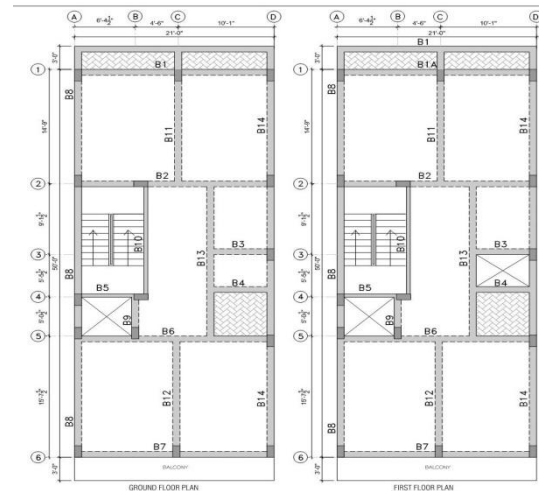
# ASSOCIATES

## ▪ **YOGESH AGGARWAL**

- BTECH CIVIL WITH DISTINCTION.
- WORK EXPERIENCE OF AROUND 2 YEARS.
- QUALIFIED **GATE-15,16,17** CONDUCTED BY I.I.T'S.
- GOOD COMMAND IN DESIGNING OF R.C.C. STRUCTURES .
- DESIGNED VARIOUS PROJECTS FOR GROUP HOUSING, COMMERCIAL, RESIDENTIAL, HOSPITALS, SCHOOLS ETC.
- VARIOUS PROJECTS ASSOCIATED WITH:- **AIMS(FARIDABAD), SETHI VENICE, ALFATHUMB BY BHUTANI GROUP, DR. LAL PATH LABS.**
- SOFTWARE SKILLS:- ETABS, STAAD, SAFE, AUTO CAD, MS-OFFICE, R.C.D.C.

# RECENT HOUSING PROJECTS

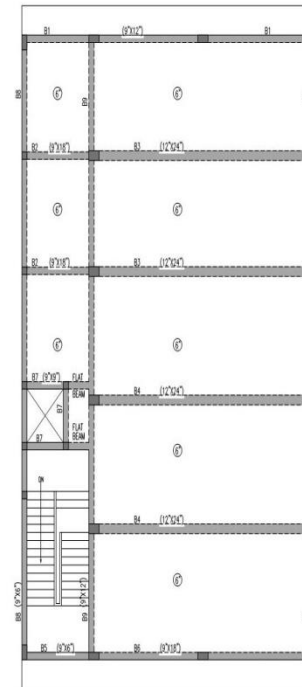
- A G+2 storey house in Rohtak(Haryana)
- A G+3 storey house in Rohtak(Haryana)
- A G+2 storey house in New-Delhi(Delhi)



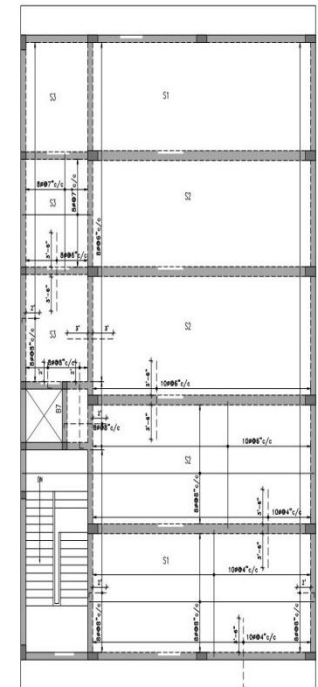


# RECENT COMMERCIAL PROJECTS

- A G+5 commercial building at Rohtak(Haryana)
- A G+3 Banquet hall in New-Delhi
- A G+1 shopping complex at Jhajjar(Haryana)



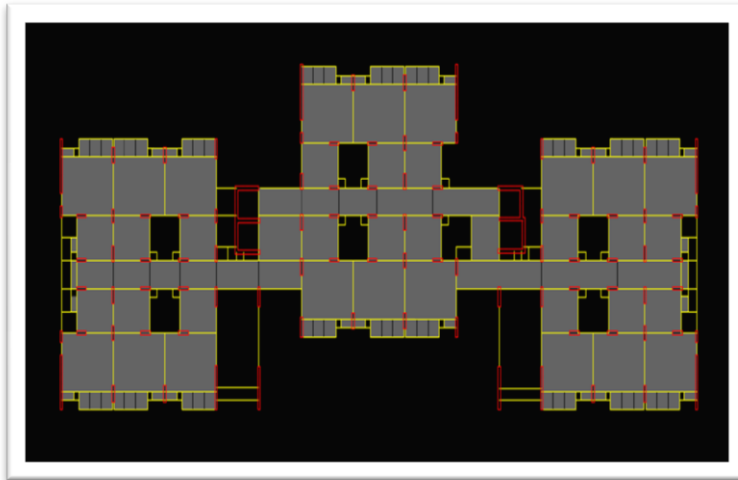
FRAMING PLAN



SLAB DETAIL

# PAST PROJECTS ASSOCIATED WITH

**AIMS FARIDABAD G+17**



**SRS Affordable Housing  
G+12**

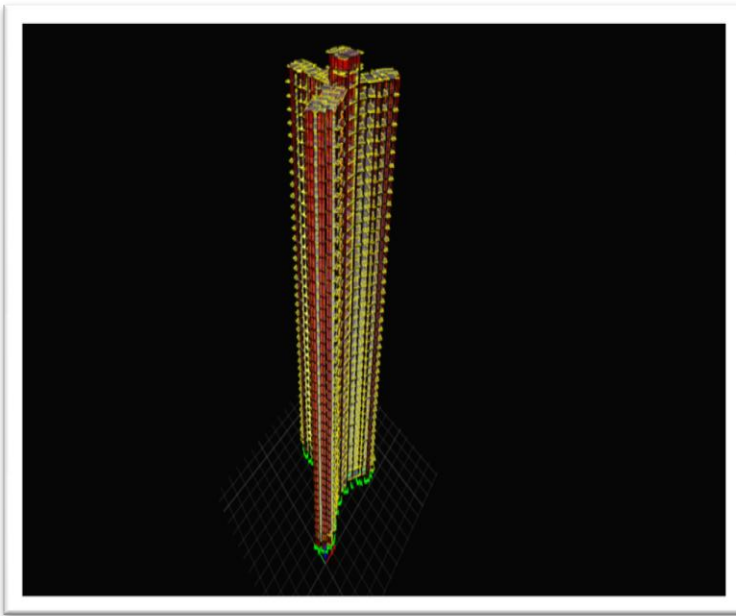




# PAST PROJECTS ASSOCIATED WITH

**GARDEN ISLES BY JAYPEE  
GROUP G+38**

**SETHI VENICE**





# KEY SKILLS

- Design of Foundations(Raft, isolated, Combined Footing).
- Design of Columns, Shear Walls.
- Design of Staircases, Ramps, Lift Rooms.
- Design of Slabs & Beams.
- Design of Water tanks, Pump rooms.
- Design of Retaining Walls and Basements.
- Design of Flat slabs .
- Design of Swimming pools.